

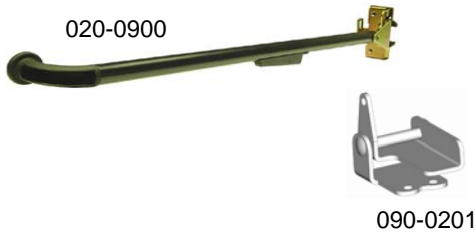
Table of Contents

Linkages

Page

Inside Release

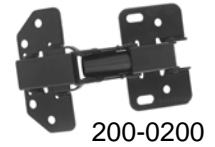
020-0900 Remote Inside Release	90
090-0201 Push Button Linkage	91



Hinges

Page

200-0100 Hinge Assembly—Plastic.....	92
200-0200 Cabinet Hinge	92



Electrical/Electronic

Page

e-ASK System	93
e-ASK Accessories	93

Radio Frequency (RF)

500-1000 e-ASK System	94
500-1100 e-FOB System	95
510-0100 e-ASK I/O Module.....	96
510-0250 e-ASK CAN IO and RF Module	97
530-0100 e-FOB Transmitter.....	98

Keypad

540-0100 e-PAD Keypad.....	99
540-0125 e-PAD With Relays.....	100
540-0200 Lighted Grab Handle With Keypad (e-GRAB).....	101

Actuators

550-0100 Power Lock Actuators.....	102
------------------------------------	-----

Switches

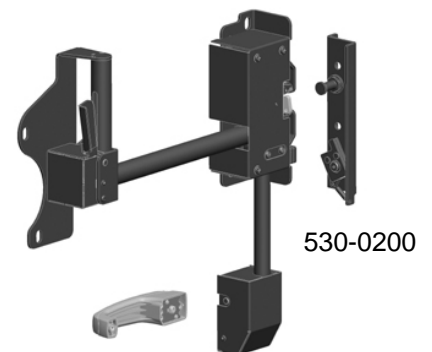
610-0100 Ignition Switch	103
--------------------------------	-----



Door Systems

Page

100-5010 TriGuard Heavy Duty Door Hardware Kit Module V1	104
--	-----



020-0900 Remote Inside Release

This product was specifically designed for off-highway vehicle applications including agricultural and construction equipment that require a remote inside release. The robust construction is incorporated into round tubing for support for the opening and closing functions of the door and provides for greater ease of operation (ergonomics) over direct releases.

- Medium to heavy weight doors for off-highway vehicle applications
- Doors where it is desirable to have the inside release remotely located to the latch location

FEATURES/BENEFITS:

- The inside release can be positioned at any point along the tube for convenient location to suit the door/cab design over direct lever releases
- The inside release is connected by a rod to the latch and includes an integrated return spring
- The cam detail in the inside release is reversible allowing the inside release to be actuated in the opposite direction providing flexibility in the product application

AVAILABLE:

- As an inside release sub-assembly for installation into your door tube. (Requires TriMark application assistance and approval.)
- In 25mm steel tubing diameters, painted black
- In different tubing lengths with various inside release positions and 90 degree mounting end
- Inside release with tube is adaptable to several different latch platforms
- Customization is available including formed tubing (please inquire)
- As a complete modular system including exterior handle, direct release latch, latch striker, inside release, gaskets, mounting brackets, latch cover, door tube and all necessary fasteners



INSTALLATION:

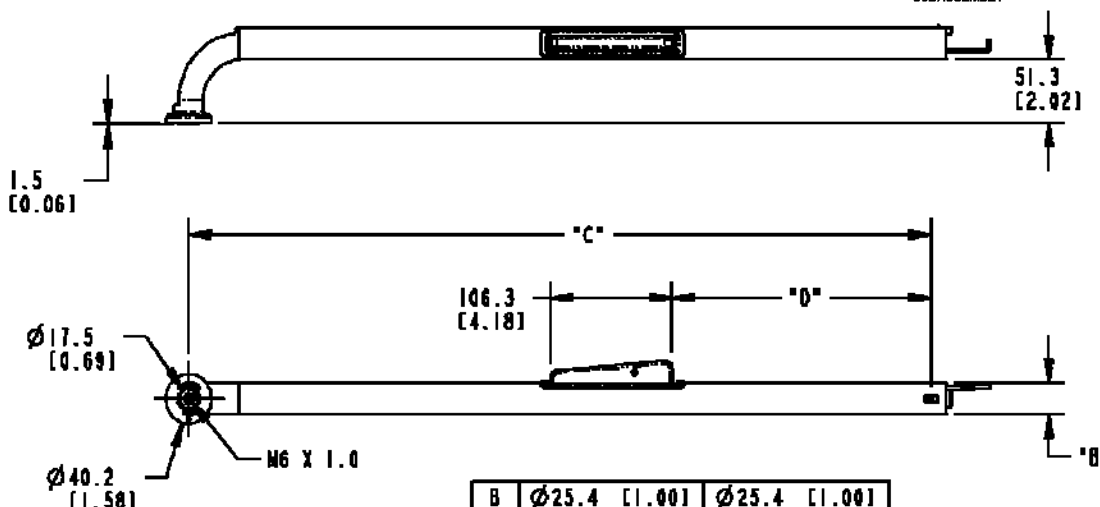
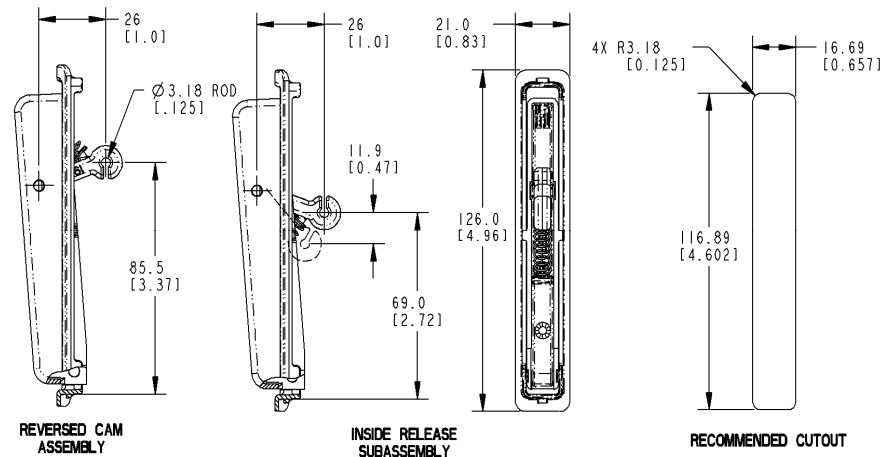
- Tubing assembly - installs with a single M6 X 1.0 bolt. Glass mounting is also possible with available mushroom window fixing designed for 5-6mm glass thickness. Recommended mounting fastener torque to be 3.3 - 4.5N-m (30-40 lbf-in)
- The inside release sub-assembly installs without tools into the pipe and includes a flange that covers the tubing cutout

MATERIAL/FINISH:

- Inside release components: glass reinforced nylon
- Tubing: painted steel
- Mounting end: glass-reinforced nylon with brass threaded insert

CAUTION: Inside release does not meet the locking requirements for FMVSS 206.

U.S. Patent No. 7,198,308 and 7,111,879



B	Ø25.4 [1.00]	Ø25.4 [1.00]
C	650.6 [25.61]	335.6 [13.21]
D	227.0 [8.94]	81.8 [3.22]

090-0201 Push Button Linkage

This linkage is designed for medium to heavy-duty applications for off-highway entrance doors requiring latch location remote from activating push button handle. Available with and without an integrated inside release lever these linkages provides for ease of mounting and applications.

DESIGNED FOR:

- Off-highway vehicle applications — construction, mining, agricultural, forestry
- Doors requiring latch location remote from activating push button handle

FEATURES/BENEFITS:

- Mounts in doors requiring latch location remote from activating handle
- Some provide an integrated inside release lever

AVAILABLE:

- In right or left hand configurations
- In a variety of bell cranks, with and without an inside release lever

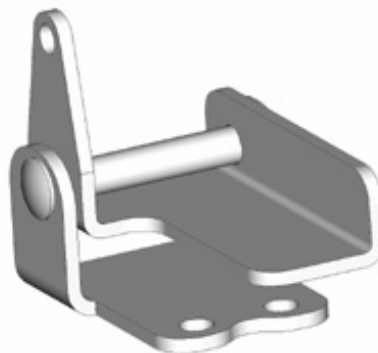
MATERIAL:

- Linkage components: zinc plated, mild steel

FINISH:

- Zinc Plated, clear chromate steel components

CAUTION: Some linkages do not comply with locking requirements of FMVSS 206



For more information visit
www.trimarkcorp.com